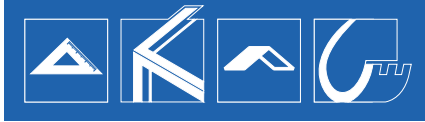


**BAUPARTNER**  
GROUP OF COMPANIES



---

# BAUPARTNER GROUP OF COMPANIES

**THE RIGHT PARTNER.**

**ACHIEVING SUCCESS  
THROUGH COLLABORATION**

---

BAUPROJEKT

BAUELEMENTE

BAUPARTNER CONSTRUCT

BAUPARTNER BAUTECHNIK

---

**4.500.000 M<sup>2</sup> BUILT**  
AND WE'RE NOT  
STOPPING **HERE!**

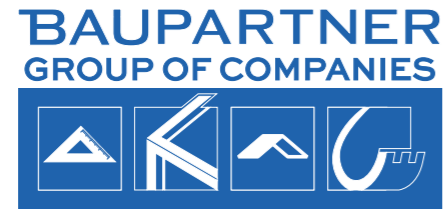
---

#### **THE RIGHT PARTNER**

We are committed to delivering quality, value and satisfaction to our clients and partners. We aim to develop strong and trusted partnerships in close collaboration with our clients, designers, engineers, contractors and suppliers.

Through our complete services, we are able to see through the construction of a wide range of buildings. With more than 20 years of experience on the Romanian market, we are professionals in design and construction and we're dedicated in what we do:

TRANSFORMING  
OUR CLIENTS'  
IDEAS AND  
**PROJECTS**  
INTO REALITY.



## ABOUT US

### MORE THAN A CONSTRUCTION COMPANY. THE RIGHT PARTNER FOR YOU!

#### WHO WE ARE

-

The BAUPARTNER group of companies is your construction partner, offering integrated solutions for large and small companies, supporting clients through to implementing their projects.

TURNKEY PROJECTS using design&build integrated services

#### AREAS OF EXPERTISE



INDUSTRIAL



LOGISTIC



RESIDENTIAL



COMMERCIAL

#### WHAT WE CAN OFFER

-

KNOW-HOW

RELIABILITY AND FAIRPLAY

INTEGRATED SOLUTIONS

EACH COMPANY IN THE GROUP IS ABLE TO OFFER ALL **OUR SERVICES** INDIVIDUALLY, ALLOWING YOU TO SELECT WHAT **SUITS YOU BEST.**

## BAUPROJEKT



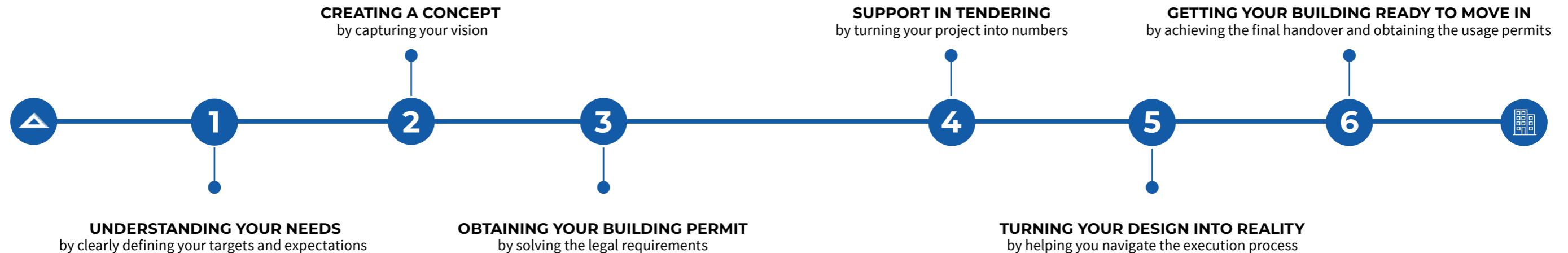
### INDUSTRIAL PROJECTS ARE A CLASS OF ARCHITECTURAL DESIGN ALL OF THEIR OWN.

Our areas of expertise cover various types of projects, from logistic and industrial to residential or commercial. The key attributes of our company are its integrated approach, consistent experience and BIM workflow.

### THE OFFICE

Our target	To deliver predictable results in an unpredictable world through close coordination and collaboration.
Main focus	To give you our best in every context - No matter its size, we treat every project - from the smallest to the largest - with the same amount of attention and equal importance.
Process	An integrated approach to design and engineering in a rapidly shifting environment. We involve our network of specialists in all the steps of a project, enhancing the workflow through all the phases of the design process.

### HOW CAN WE BE OF SERVICE?



## DESIGNS THAT HOUSE YOUR NEEDS

### WE OPERATE IN THE FIELD OF ARCHITECTURE, INTERIOR DESIGN AND ENGINEERING.

We merge architecture & engineering to incorporate usability and aesthetics into your Project.

Our returning clients are proof of our conduct, ethics and integrity.

We use 3D Spatial Coordination and collaboration combined with cost and schedule optimization, conflict detection and risk mitigation.

### KEY ASSETS

-

### Integrated approach

### Solid experience

### BIM Workflow

# BAUELEMENTE



## PRECAST-PRESTRESSED CONCRETE STRUCTURES

We offer integrated design&build solutions to meet all your needs for structural project, including shell and core building systems. The production lines in our factories are versatile and cross compatible.

## FIELDS OF ACTIVITY

Quality production and assembly

Quality is ensured through a wide range of molding machines and automated processing lines, specially designed for precast concrete production.

High end performance design

The prestressing process removes the design limitations of conventional concrete in terms of span, load and fire proofing. The company's design team is highly specialized, having an extensive experience in the field.

Construction speed

Using precast-prestressed concrete parts helps architects and engineers to build faster, safer, and in a more effective way.

Wide product range

Besides our high-end solutions for precast concrete items used in civil and industrial buildings, we also specialize in producing parts for agriculture and road infrastructure systems.

## CONCRETE SOLUTIONS FOR CONCRETE RESULTS



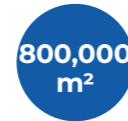
Team with over 20 years' experience



Named market leader in Romania by Precast Concrete Market Romania 2020 Interbiz



3 factories in Romania



Production capacity of more than 800,000 m<sup>2</sup> per year



Over 200 satisfied and return clients



Structure or shell and core service

# CONCRETE SOLUTIONS



SIBIU  
PLOIESTI  
BUCHAREST

## OUR FACTORIES



### Ploiesti - Aricestii Rahtivani

Our first factory was built in 2007, and it has undergone several extensions since. In 2015 we completed on a new factory dedicated to producing prestressed concrete poles for agriculture, in order to diversify the product range.



### Bucharest - Bolintin Deal

The factory is located near the A1 highway, serving the area around Bucharest and the south-east of Romania. It was extended, completely refurbished and modernized in 2019.



### Sibiu - Cristian

Our facility in Sibiu provides precast, prestressed items for our projects in the north-west of the country. In 2018, it was also extended and completely refurbished.

# BAUPARTNER CONSTRUCT



## GENERAL CONTRACTOR

Since 2008, we have been turning projects into reality, from residential and office buildings to retail and even industrial and logistics facilities for the biggest names in Romania.

## FIELDS OF ACTIVITY

Turnkey services

Our experience is the key. It starts with project preparation, price estimates and scheduling and goes all the way through to building site facilities and on-site support during the build. We are there to advise clients right from the early design phase. Together, we optimize construction and operating costs and minimize risks.

Civil and Industrial construction.

Know-how in Construction and Project Development are the key to accomplishing large, complex projects for both national and international customers with high quality expectations.

Engineering and coordination

Small and large-scale developments require strong partnerships with a wide array of experts and engineering professionals. Their experience in the field ensures that the work is carried out and delivered on time.

## KEY ASSETS



Turnkey solutions



On-time delivery, fast turnaround



Competitive costs



Strong partnership



Solid experience



Proven reliability

# YOUR NEED IS OUR MISSION



### Great people

Thanks to the hard work and commitment of our specialists, workers, experts, engineers, contractors and collaborators, we are one of the most renowned construction companies in Romania. Together with our clients, we've built an unbeatable network.

### Stable and efficient construction processes down to professional managing of resources

### Reliability on deadlines, costs and quality

We are used to tight deadlines and fast turnarounds. That is why our teams of professionals plan everything in detail. No matter what challenges we face, together we will find the best solution so that requirements are met to a high standard.

### Partnership based on trust

Loyalty, partnership, respect - we incorporate this into everything we do. Our return clients prove this. Year after year and project after project, we improve and develop.

# BAUPARTNER BAUTECHNIK



## EARTHWORK, EXCAVATION AND DEMOLITION AT ANY SCALE

Our mission is to offer solutions with high-performance construction equipment. We shift earth, demolish and lease various construction equipment, from mini excavators to tower cranes.

### FIELDS OF WORK

Baupartner Bautechnik's capacity to lease equipment as well as to do the works is a fundamental advantage for many of our clients.

Earthwork	Our work include topsoil removal, soil grading, backfilling, landscaping, paving and building roads.
Excavation	Our professional excavators are used on building foundations, reservoirs and roads.
Demolition	Our extensive experience allows us to complete any large or small-scale demolition in a safe and efficient manner.
Supply	The extensive inventory of specialized equipment is kept up to date in order to provide you with reliable and efficient machines.

### BAUTECHNIK KNOWS HOW TO GET THE JOB DONE



Celebrating over 20 years of service



Up-to-date equipment



Proven track record in the market



Solid industry relationships



High safety standards

# ALWAYS ON THE GROUND



### KEY ASSETS

**Earthworks and demolition work:**  
We aim to provide you with the leading services on the market. We comply with your project terms and special requests to reach the desired results in a safe and efficient way.

**Wide range of construction equipment:**  
Our range of rentals is tailored to your individual requirements and covers wheeled and crawler excavators, front loaders, compaction rollers, cranes and trailers. Whether your business involves residential, commercial or industrial constructions, heavy excavation or road building, our modern fleet of machines makes us able to accommodate your needs quickly.

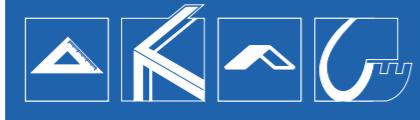
**BAUPARTNER  
GROUP OF COMPANIES**



**CLIENTS AND PARTNERS**



BAUPARTNER  
GROUP OF COMPANIES



SELECTED WORKS

---

---

THE SAME  
**DEDICATION AND  
ENTHUSIASM**  
REGARDLESS OF  
THE **PROJECT**  
FUNCTION  
AND SIZE

## EMAG BUDAPEST LOGISTIC CENTER

eMAG Hungary and Extreme Digital, the two leaders of online commerce in Hungary, join forces, giving rise to one of the most important e-commerce companies in Central and Eastern Europe.

### GENERAL INFORMATION

-

**Function:**

Logistics and offices

**Area:**

116,457 m<sup>2</sup>

**Location:**

Budapest, Hungary

**Client:**

EMAG Logistica

**Status:**

Under construction

**Year:**

2021-2023

### TASKS

-

General designer and general contractor



### THE WAREHOUSE

-

**About:**

The second eMAG logistic center is similar to the first one, located in Romania.

The master plan of the new logistics development provides for the construction of a storage building of approximately 110,000 m in the first phase, with the possibility of doubling this area in the second phase of the project.





## THE WAREHOUSE

**About:**  
 This first unit will host all activities in the logistic sector, including courier operations.



## EMAG 's LOGISTIC CENTER

eMAG is a pioneering Romanian company and the market leader in the e-commerce. The company has been continuously investing in technology-based services developed in Romania that save time and add value for their customers.

### GENERAL INFORMATION

-

**Function:**  
Logistics

**Area:**  
255,114 m<sup>2</sup>

**Location:**  
Joita, GR, Romania

**Client:**  
EMAG Logistica

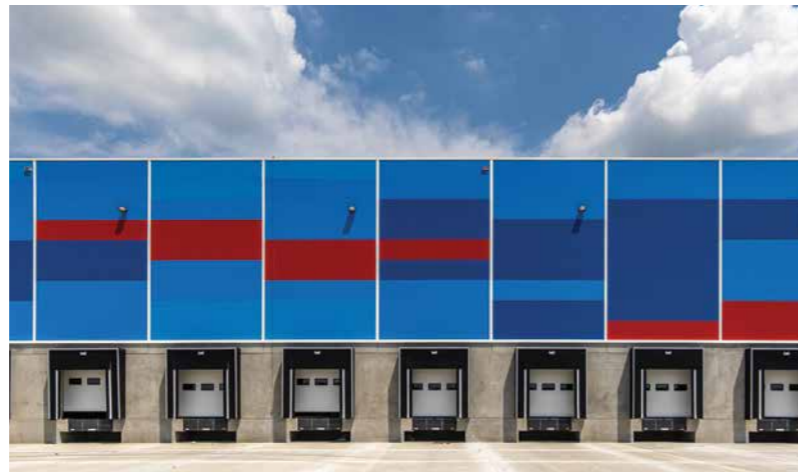
**Status:**  
Built

**Year:**  
2017-2021

### TASKS

-

General designer and general contractor



### THE WAREHOUSES

-

#### About:

This large-scale logistics facility is situated close to the A1 highway, near Bucharest. In an expression of the values and the motto of the company – “online will always be easier”, the buildings have become the interface between the virtual and the physical world. They house all logistics-sector activities and give special attention to the social and interaction spaces for all the workers.



## THE WAREHOUSES

### About:

The buildings accommodate all the activities related to the logistic section. In addition to the main warehouse, it provides dedicated spaces for workers, locker rooms, dining rooms, offices and a truck and staff entrance building.



## THE OFFICES

### About:

The interior design for the office area was based on 2 pillars: the company philosophy ("Build for people"), and the its business model (the e-commerce that blends the logistics/ industrial area with the digital world).



## HAIER

Haier Europe is part of Haier Smart Home, the number one group globally in home appliances and among the Fortune Global 500 Companies. Haier Smart Home is present in all 5 continents with 25 industrial parks, 10 research and development centers and approximately 100,000 employees.

### GENERAL INFORMATION

-

**Function:**  
Production

**Area:**  
57.500 m<sup>2</sup>

**Location:**  
Ariceştii Rahtivani, PH, Romania

**Client:**  
HAIER TECH

**Status:**  
Built

**Year:**  
2020

### TASKS

-

General designer and  
general contractor



### THE FACTORY

-

#### About:

The new factory will employ nearly 800 people – at full capacity – for an expected production of 600,000 units after 2022. The factory design, which is based on modular approach, will allow an expansion up to 1 million units at full capacity. The Romanian plant is a world-class facility featuring premium production processes brought by Haier's advanced R&D, manufacturing capabilities and know-how. Its strategic central location, technology and efficiency will enhance Haier's ability to serve customers in the region.



## PROMENADA FESTIVAL SHOPPING CITY SIBIU

Festival Shopping City Sibiu is a shopping mall located near the historic center of Sibiu.

### GENERAL INFORMATION

-

**Function:**  
Retail

**Area:**  
132.700 m<sup>2</sup>

**Location:**  
Sibiu, SB, Romania

**Client:**  
Festival Shopping Center

**Status:**  
Built

**Year:**  
2018-2019

### TASKS

-

Design and build of structure and building envelope



## THE SHOPPING CENTER

-

### About:

With 42.500 m<sup>2</sup> gross lettable area and 145 tenants, the shopping center only opened in 2019. The building is quite remarkable, with its playful facade and green roof promenade. Bauelemente had the opportunity to showcase its services by taking charge of the design and building the structures and enclosures.



## DECATHLON

Decathlon is a French sporting goods retailer. With over 2080 stores in 56 countries, it is the largest sporting goods retailer in the world. Decathlon is dedicated to helping, inspiring and guiding their clients through their sports-related purchases.

### GENERAL INFORMATION

-

**Function:**  
Logistics

**Area:**  
33.000 m<sup>2</sup>

**Location:**  
Stefanestii de jos, IF, Romania

**Client:**  
Decathlon, WDP Development

**Status:**  
Built

**Year:**  
2016-2017

### TASKS

-

General designer and  
general contractor



### THE LOGISTICS FACILITY

-

#### About:

The logistics building, consisting of a warehouse and a distribution center, is located close to A3 Highway. The importance given to the social and administrative spaces through design has translated into a user-friendly building that prompts people to work better and communicate to obtain the best results.

Throughout the process, from design to build, our companies proved once again that a collaborative approach and integrated design are the best way to meet the client's needs.



## ADEPLAST

AdePlast is the largest Romanian manufacturer of building materials, with four industrial platforms in Oradea, Ploiești, Roman and Ișalnița. Adeplast is the country leader and well recognised across Europe.

### GENERAL INFORMATION

-

**Function:**

Production hall

**Area:**

10.800 m<sup>2</sup>

**Location:**

Ișalnița, DJ, Romania

**Client:**

Adeplast

**Status:**

Built

**Year:**

2018

### TASKS

-

General contractor



### THE FACTORIES

-

**About:**

Over the years, Baupartner Group has had several contracts with Adeplast. The most notable works include:

- 10.800 m<sup>2</sup>, mortar and expanded polystyrene production hall in Ișalnița
- expanded polystyrene factory (phase III) and 1.910 m<sup>2</sup> paint factory, in Ploiești,
- 4.200 m<sup>2</sup> dry mortar factory and a 2.500 m<sup>2</sup>, expanded polystyrene production hall in Roman



## VULCAN RETAIL PARK

### GENERAL INFORMATION

-

**Function:**  
Services

**Area:**  
29.000 m<sup>2</sup>

**Location:**  
Bucharest, Romania

**Client:**  
NEPI

**Status:**  
Built

**Year:**  
2014

### TASKS

-

Structural design and general contractor, without the installations

NEPI Rockcastle is the premier owner-operator of shopping centers in Central and Eastern Europe (CEE) and are present in nine countries. NEPI - New Europe Property Investment developed a new retail park of approximately 28.390 m<sup>2</sup> on the site of the former Vulcan factory in Bucharest.



### THE SHOPPING CENTER

-

#### About:

Vulcan Retail Park will serve the southwestern part of Bucharest, being designed to meet the needs of about 395,000 residents around it - the equivalent of a 30 minutes drive. The concept included building a Hypermarket and Gallery, a Strip Mall and a drive through fast food restaurant, all constructed at ground floor level around a central 874-bay car park.



## GARTEN RESIDENZ

### GENERAL INFORMATION

-

**Function:**  
Residential

**Area:**  
6.000 m<sup>2</sup>

**Location:**  
Strejnicu, PH, Romania

**Client:**  
Rombel Residence

**Status:**  
Built

**Year:**  
2019

### TASKS

-

General designer and general contractor  
Investor, Developer

Garten Residenz is a real estate complex, located in Strejnicu, Prahova, with a total of 72 units. This residential project provides 5 types of houses that are united in their diversity.



## THE LUXURY RESIDENTIAL COMPLEX

-

### About:

The newest and most ambitious housing project in Ploiesti, Garten Residenz, is a complex of houses located on the Western Belt of the city, in Strejnicu. Baupartner Construct, as general contractor, coordinated the project's entire implementation.



## METRO

Metro AG is the leading international wholesaler and retailer. The distinctive business concept is oriented towards helping professional customers to successfully run their own businesses.

### GENERAL INFORMATION

-

**Function:**

Logistic

**Area:**
55.000 m<sup>2</sup>
**Location:**

Stefanestii de Jos, IF, Romania

**Client:**

WDP Development

**Status:**

Built

**Year:**

2019

### TASKS

-

General contractor



## THE LOGISTICS FACILITY

-

**About:**

The logistics warehouse developed by WDP for Metro Cash & Carry in the north of Bucharest includes both a storage area without temperature control, as well as one with cooling and freezer for food distribution. Together with Metro and WDP, we contributed to the construction of the logistics center.

We are proud to have been given the opportunity to take on the role as general contractor and to rise to all the challenges that arose throughout the project.



## RONDOCARTON

Rondocarton is a Romanian company within the Austrian group, Rondo Ganahl. Its business is centred around manufacturing corrugated board packaging products and corrugated case material and a range of paper and packaging.

### GENERAL INFORMATION

-

**Function:**

Production hall

**Area:**

17.000 m<sup>2</sup>

**Location:**

Targoviste, DB, Romania

**Client:**

Rondocarton

**Status:**

Built

**Year:**

2006

### TASKS

-

Design and general contractor



### THE FACTORY

-

**About:**

This factory in the metropolitan area of Targoviste was opened in 2008 and uses the latest technologies and the best-trained employees to produce the full range of high-quality corrugated packaging. Baupartner helped expand the Rondo production network in Romania and was involved as general contractor on the design & build process.



## LEM'S

The Lemet company has been founded in 1991 in Câmpina. Since then, it has gone through all the stages of evolution in order to become a solid and promising company. It currently has 70 stores with 72,000 sqm of exhibition space and about 900 employees.

### GENERAL INFORMATION

-

**Function:**  
Showroom

**Area:**  
9.000 m<sup>2</sup>

**Location:**  
Bleji, PH, Romania

**Client:**  
LEMET

**Status:**  
Built

**Year:**  
2017

### TASKS

-

Structural design and  
general contractor



### THE SHOWROOM

-

**About:**  
The LEM'S showroom made for Lemet is located in the commercial area near Ploiesti, Prahova and it was built in 2017.



## SAIPEM

Saipem is a world leader in engineering and drilling and in developing major projects in the energy and infrastructure sectors.

### GENERAL INFORMATION

-

**Function:**  
Industrial, Office

**Area:**  
14.000 m<sup>2</sup>

**Location:**  
Aricestii Rahtivani, PH, Romania

**Client:**  
SAIPEM

**Status:**  
Built

**Year:**  
2015

### TASKS

-

General design and  
general contractor

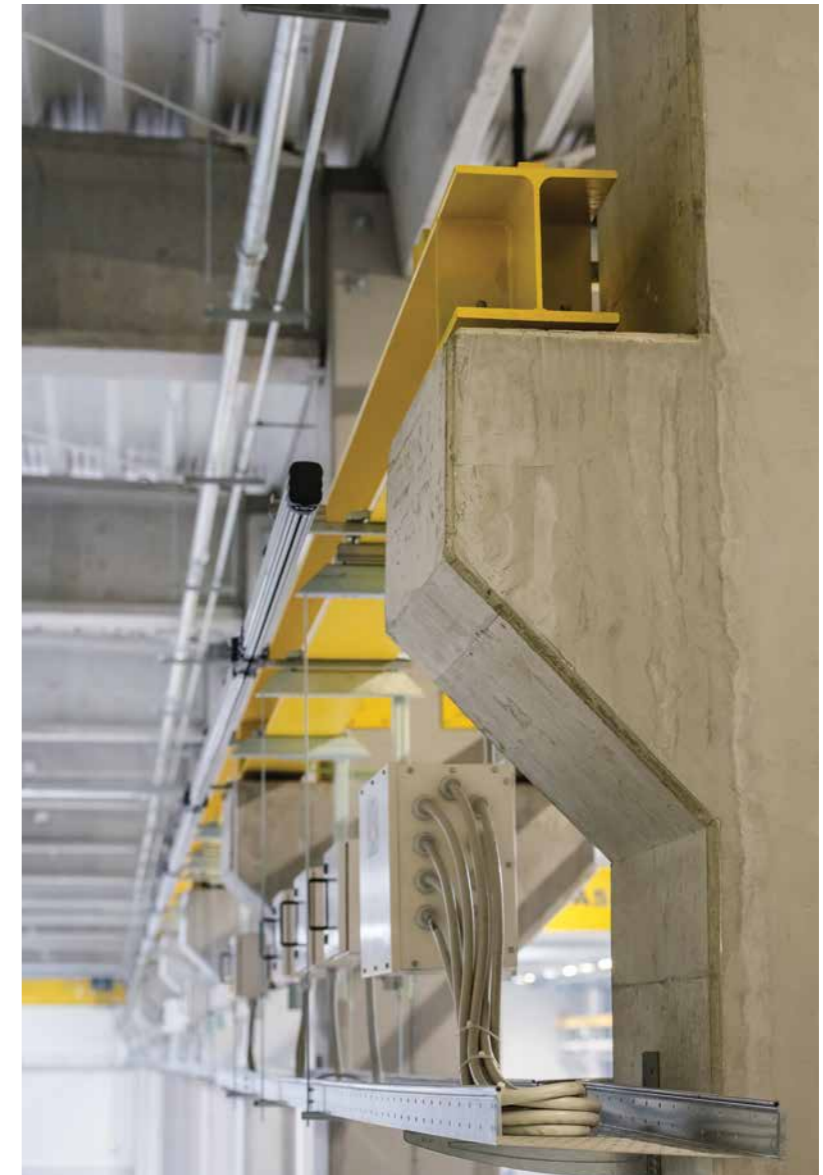


### THE PRODUCTION HALL

-

#### About:

The Romanian division of Saipem needed a unit to process transport pipelines for crude oil and natural gas, with its administrative headquarters also located on the same site. Annexes, roads and footpaths, parking spaces, platforms, fencing and connections were also part of our construction job, covering everything from earthwork to internal finishes and external fittings.



## CUBIC CENTER

Cubic Center is a beautifully designed and well-equipped class A office building located in the Pipera business area of Bucharest. The contemporary facilities in high quality, modern design with generous open spaces offer the perfect working environment.

### GENERAL INFORMATION

-

**Function:**  
Office

**Area:**  
30.000 m<sup>2</sup>

**Location:**  
Bucharest, Romania

**Client:**  
Cubic Center

**Status:**  
Built

**Year:**  
2007

### TASKS

-

General contractor



## THE OFFICE BUILDING

-

### About:

Located in the Pipera business area of Bucharest, the building provides 30.000m<sup>2</sup> of class A office space divided into 12 floors. Underground parking is over 3 floors. The structure consists of reinforced concrete columns, flat slabs and central cores. Cubic Center was built using a traditional in-situ structural system. It is one of the iconic works in our portfolio.



## BAUPARTNER HQ

The headquarters of the Baupartner Group offer a high-class, innovative working environment its employees. Its “raw” architectural style showcases our day-to-day work to our clients and visitors.

### GENERAL INFORMATION

-

**Function:**  
Office

**Area:**  
1.000 m<sup>2</sup>

**Location:**  
Arcestii Rahtivani, PH, Romania

**Client:**  
Baupartner SRL

**Status:**  
Built

**Year:**  
2016

### TASKS

-

General design and  
general contractor



## THE HEADQUARTERS

-

### About:

The office building is situated close to Ploiesti and it was designed to accommodate all the companies of Baupartner Group. The interior design reflects the specific materials produced by the companies in their rough form: exposed concrete, visible metallic structures and formwork.





# BAUELEMENTE PRODUCTS

## FOR INDUSTRIAL BUILDINGS

### Prefabricated foundations:



### Columns:



### Beams:

- Trapezoidal beam
- Beam type TR
- Rectangular beam
- Beam type L
- Beam type I
- Double slope beam



### Ceiling:

TT ceiling

### Wall panel:

Sandwich wall panels



## FOR ROADS AND BRIDGES

### For roads:

- New Jersey Barrier
- Concrete road bollards



### For bridges:

- Beams
- Length: up to 38.0 m



### FOR AGRICULTURE

-

#### For vineyard:

Middle pole orcharding  
Section: 70 x 75 mm

End pole orcharding  
Section: 83 x 85 mm

#### For orcharding:

Middle pole orcharding  
Section 1: 75 x 80 mm  
Section 2: 80 x 85 mm

End pole orcharding  
Section 1: 95 x 95 mm  
Section 2: 100 x 120 mm



## BAUPARTNER GROUP OF COMPANIES



# PORTFOLIO

### 2022-2021

PROJECTS	AREA	FUNCTION	ROLE
eMAG logistics center and office building in Budapest, Hungary	116,457 m <sup>2</sup>	logistics, office building	designer & general contractor
LIDL logistic warehouse in Aricestii Rahtivani	82,438 m <sup>2</sup>	logistics	general contractor
"Promenada Mall" in Craiova	76,995 m <sup>2</sup>	retail	precast elements
CARREFOUR Supermarket in Alba Iulia	11,232 m <sup>2</sup>	retail	precast elements
BOSCH warehouse in Blaj	2,118 m <sup>2</sup>	warehouse	precast elements
JUMBO supermarket in Sibiu	14,935 m <sup>2</sup>	retail	precast elements
Commercial galleries in Moreni	6,156 m <sup>2</sup>	retail	precast elements
"BvW6" for KARL HEINZ DIETRICH in Brasov	11,132 m <sup>2</sup>	warehouse	precast elements
PENNY Supermarket in Sabaoani	1,485 m <sup>2</sup>	retail	precast elements
"SUNGARDEN" in Pucioasa	6,800 m <sup>2</sup>	warehouse	precast elements
eMAG warehouse in Chitila for SAMEDAY	3,183 m <sup>2</sup>	warehouse	designer & general contractor
Alianso production hall "NOV" in Aricestii Rahtivani	1,013 m <sup>2</sup>	production hall	designer & general contractor
Production hall extension in Aricestii Rahtivani for HAIER	4,020 m <sup>2</sup>	production hall	precast elements

### 2021-2019

PROJECTS	AREA	FUNCTION	ROLE
"BUCH 21" in Dragomirestii Vale	10,488 m <sup>2</sup>	warehouse	precast elements
VGP in Stefanestii de jos	28,887 m <sup>2</sup>	warehouse	precast elements
Global Star in Domnesti	2,385 m <sup>2</sup>	warehouse	precast elements
Retail Park in Ploiesti	25,255 m <sup>2</sup>	retail	precast elements
Auto Showroom	854 m <sup>2</sup>	showroom	precast elements
LEM's showroom in Campina	3,300 m <sup>2</sup>	showroom	general contractor
"LEMET" showroom in Brebu	8,442 m <sup>2</sup>	showroom	general contractor
MATCA in Galati	1,480 m <sup>2</sup>	warehouse	precast elements
Global Vision in Oarja	8,016 m <sup>2</sup>	warehouse	precast elements
Global Vision B2 in Lazau, Constanta	24,850 m <sup>2</sup>	warehouse	precast elements
Global Vision phase 2 in Chitila	14,940 m <sup>2</sup>	warehouse	precast elements
Global Vision phase 3 in Chitila	36,953 m <sup>2</sup>	warehouse	precast elements
Retail Park in Barlad	18,587 m <sup>2</sup>	retail	precast elements
"Alcar" warehouse in Ștefăneștii de Jos for WDP	9,800 m <sup>2</sup>	warehouse	general contractor
"Aggreko" warehouse in Ștefăneștii de Jos for WDP	2,800 m <sup>2</sup>	warehouse	general contractor
DECATHLON warehouse extension in Ștefăneștii de Jos	10,434 m <sup>2</sup>	warehouse	general contractor
eMAG logistics unit in Joița - Giurgiu	129,690 m <sup>2</sup>	logistics	general contractor
HAIER refrigerator factory in Ariceștii Rahtivani	57,500 m <sup>2</sup>	production	designer & general contractor
LIDL logistics center in Cernica	62,180 m <sup>2</sup>	logistics	precast elements
PIRELLI warehouse in Slatina (phase II)	63,755 m <sup>2</sup>	production	precast elements
Warehouse in Șura Mică for RARA LOGISTIC	6,880 m <sup>2</sup>	warehouse	precast elements
Shopping center in Sf. Gheorghe for SEPSI	20,300 m <sup>2</sup>	retail	precast elements
Warehouse in Ștefănești for BRIOTHERM XPS	3,600 m <sup>2</sup>	logistics	precast elements
Car Trans Truck Service, warehouse and administrative section in Ploiești	2,750 m <sup>2</sup>	warehouse	precast elements
SAMEDAY logistics center in Chitila for EMAG	27,000 m <sup>2</sup>	logistics	designer & general contractor
Elemaster warehouse in Băiculești for E-RES REAL ESTATE & ENERGY	10,570 m <sup>2</sup>	production	precast elements
"Promenada Festival Shopping City Sibiu" for FESTIVAL SHOPPING CENTER	132,700 m <sup>2</sup>	retail	structures and building envelope

## 2019-2017

PROJECTS	AREA	FUNCTION	ROLE
Production hall in Filipeștii de Pădure for LTEN PROJECTS IND SRL	5,115 m <sup>2</sup>	production	precast elements
PIRELLI warehouse in Slatina (phase I)	29,580 m <sup>2</sup>	production	precast elements
"Garten Residenz" luxury residential complex in Strejnicu for ROMBEL RESIDENCE	6,000 m <sup>2</sup>	residential	general contractor
"Targu Mures Shopping City" for TARGU MURES SHOPPING	56,000 m <sup>2</sup>	retail	structures&building envelope
CARREFOUR logistics extension in Ștefăneștii de Jos for WDP	7,259 m <sup>2</sup>	logistics	general contractor
"LPP Fashion" logistics center in Ștefăneștii de Jos for WDP	22,000 m <sup>2</sup>	logistics	general contractor
"Metro Cash & Carry" logistics center in Ștefăneștii de Jos for WDP	55,000 m <sup>2</sup>	logistics	general contractor
ADEPLAST mortar and expanded polystyrene production hall in Ișalnița	10,800 m <sup>2</sup>	production&warehouse	general contractor
Production hall and warehouse in Satu Mare for ALU MENZIKEN	20,700 m <sup>2</sup>	production&warehouse	general contractor
Production hall and warehouse in Dâmbovița for CURENT METAL	12,200 m <sup>2</sup>	production&warehouse	precast elements
Warehouse in Dragomirești for E-RES REAL ESTATE & ENERGY	18,096 m <sup>2</sup>	logistics	precast elements
Eurobody logistics center in Dragomirești for E-RES REAL ESTATE & ENERGY	30,706 m <sup>2</sup>	logistics	precast elements
eMAG warehouse and office building in Joița - Giurgiu	125,424 m <sup>2</sup>	warehouse	designer & general contractor
Warehouse and office building in Dragomirești for EPSTAIN	8,230 m <sup>2</sup>	warehouse	precast elements
Bosch warehouse in Blaj for KARL HEINZ DIETRICH	22,000 m <sup>2</sup>	warehouse	structures, finishings & platforms
Logistics center extension in Codela for WDP	3,500 m <sup>2</sup>	logistics	general contractor
Production hall and warehouse in Ariceștii Rahtivani for ALINSO	20,790 m <sup>2</sup>	production&warehouse	structure & exterior works
Production hall and warehouse in Ariceștii Rahtivani for ALINSO	8,900 m <sup>2</sup>	production&warehouse	structure & exterior works
LIDL logistics center in Cordun for CONCRETE CONSTRUCTAG	44,000 m <sup>2</sup>	warehouse	precast elements
"Râmnicu Sărat Value Centre" for DEROM TOTAL	7,500 m <sup>2</sup>	retail	precast elements
"Sebeș Retail Park" for DEROM TOTAL	3,200 m <sup>2</sup>	retail	design & execution of structures
Logistics center extension in Bolintin Deal for H.ESSERS INVESTITII	25,000 m <sup>2</sup>	logistics	structures and sewagenetworks
Production hall and warehouse in Sibiu for IMPLENIA BAUGESELLSCHAFT M.B.H	13,410 m <sup>2</sup>	production	structures and building envelope
"Otopeni West Park 14" for KARL HEINZ DIETRICH	10,600 m <sup>2</sup>	warehouse	design & execution of structures
Lem's showroom in Ploiești for LEMET	9,000 m <sup>2</sup>	showroom	general contractor
Warehouse in Târgu Mureș for MAPCOM	8,800 m <sup>2</sup>	warehouse	precast elements
Production hall and warehouse in Râmnicu Vâlcea for MINET"	12,800 m <sup>2</sup>	warehouse	general contractor

## 2017-2016

PROJECTS	AREA	FUNCTION	ROLE
"Shopping City Galați" for NEPI	27,480 m <sup>2</sup>	retail	structures and building envelope
"Universal Negoii Făgăraș - Mall" for PK RED	3,150 m <sup>2</sup>	retail	general contractor
"Foșani Mall" for PK RED	6,100 m <sup>2</sup>	retail	general contractor
"Târgu Secuiesc Retail Park" for PK RED	3,300 m <sup>2</sup>	retail	general contractor
Paper roll production hall in Bucharest for ROMCARTON	42,000 m <sup>2</sup>	production	structures and building envelope
Paper roll production hall in Târgoviște for RONDOCARTON	9,900 m <sup>2</sup>	production	general contractor
Paper roll production hall extension in Târgoviște for RONDOCARTON	15,000 m <sup>2</sup>	production	general contractor
CARREFOUR logistics center in Ștefăneștii de Jos for WDP	11,000 m <sup>2</sup>	logistics	general contractor
Warehouse extension in Râmnicu Vâlcea for WDP	4,800 m <sup>2</sup>	warehouse	general contractor
Skating rink in Otopeni for AGRO TERRA SOL INVEST	3,700 m <sup>2</sup>	skating rink	precast elements
Production hall in Ariceștii Rahtivani for ALINSO	9,900 m <sup>2</sup>	logistics	general contractor, except for MEP
Automotive production hall & office building in Ariceștii Rahtivani for ALLIANSO	2,200 m <sup>2</sup>	production&office	general designer
Restaurant in Allianso Park, Ariceștii Rahtivani for ALLIANSO	577 m <sup>2</sup>	services	general designer
Rebar cutting and bending factory in Ploiești for ARTSANI	3,000 m <sup>2</sup>	production	design & execution of structures
Baupartner Group headquarters extension in Ariceștii Rahtivani for BAUPARTNER	600 m <sup>2</sup>	office building	designer & general contractor
CARREFOUR shopping center extension in Brașov	4,900 m <sup>2</sup>	retail	structures and building envelope
Warehouse and distribution center in Ștefănești for CARREFOUR	11,000 m <sup>2</sup>	logistics	designer & general contractor
Logistics center extension in Ariceștii Rahtivani for IMMOFINANZ	15,000 m <sup>2</sup>	logistics	structural design & general contractor
"Otopeni West Park 13" logistics center and offices for KARL HEINZ DIETRICH	10,600 m <sup>2</sup>	logistics	design & execution of structures
Logistics center in Sibiu for KARL HEINZ DIETRICH	10,500 m <sup>2</sup>	logistics	design & execution of structures
EMET Furniture warehouse in Brebu	5,000 m <sup>2</sup>	logistics	structural design & general contractor
"Piatra Neamț Shopping City" for NEPI	38,000 m <sup>2</sup>	retail	general contractor, except for MEP
Paper roll production hall in Popești-Leordeni for ROMCARTON	34,000 m <sup>2</sup>	production	structures and building envelope
RONDO Paper roll warehouse extension in Târgoviște	1,500 m <sup>2</sup>	warehouse	general contractor
SIÉPCOFAR warehouse in Chitila	7,500 m <sup>2</sup>	warehouse	structures and MEP under 0.00 level
Automotive production hall in Brăila for WDP	27,400 m <sup>2</sup>	production	designer & general contractor
Automotive production hall in Râmnicu Vâlcea for WDP	12,800 m <sup>2</sup>	production	structural design & general contractor

## 2016-2014

PROJECTS	AREA	FUNCTION	ROLE
Textile production factory in Râmnicu Vâlcea for WDP	7,955 m <sup>2</sup>	production	structural design & general contractor
Warehouse and distribution center in Ștefănești for WDP	29,500 m <sup>2</sup>	logistics	designer & general contractor
Textile factory extension in Ariceștii Rahtivani for ALINSO	10,000 m <sup>2</sup>	production	general contractor, except for MEP
Textile production factory extension in Ploiești for BIC	4,000 m <sup>2</sup>	production	design & execution of structures
Residential complex in Craiova for BUJORULUI RESIDENCE	9,100 m <sup>2</sup>	residential	general contractor
Paper production hall extension in Zărnești for ECOPAPER	5,000 m <sup>2</sup>	production	structures and building envelope
Logistics centre in Brașov for KARL HEINZ DIETRICH	10,000 m <sup>2</sup>	logistics	design & execution of structures
Logistics center in Otopeni for KARL HEINZ DIETRICH	11,000 m <sup>2</sup>	logistics	design & execution of structures
Verification of gas and drilling pipes production hall in Ariceștii Rahtivani for SAIPEM	14,000 m <sup>2</sup>	production & office	general designer & general contractor
Automotive production hall and office building in Ariceștii Rahtivani for WDP	12,000 m <sup>2</sup>	production & office	design & execution of structures
Logistics center for automotive spare parts in Codlea for WDP	5,000 m <sup>2</sup>	logistics	structural design & general contractor
LIDL warehouse in Ariceștii Rahtivani for ALINSO	10,000 m <sup>2</sup>	logistics	designer & general contractor
Warehouses in Ariceștii Rahtivani for ALINSO	13,700 m <sup>2</sup>	logistics	general contractor
Carservice in Bucharest for CARS TUNING	830 m <sup>2</sup>	service	design & execution of structures
Expansion joints production hall in Ariceștii Rahtivani for DEKOMTE	4,000 m <sup>2</sup>	production	general designer
Paper production hall in Brașov for ECOPACK	5,000 m <sup>2</sup>	production	structures and building envelope
Paper manufacturing hall in Zărnești for ECOPAPER	14,000 m <sup>2</sup>	production	structures and building envelope
Residential buildings in Volunatri for HIGH TECH CLIMA	2,500 m <sup>2</sup>	residential	structural works & finishing works
LEMET furniture warehouse in Brebu	5,000 m <sup>2</sup>	logistics	structural design & general contractor
LEROY MERLIN DIY store in Bragadiru	13,000 m <sup>2</sup>	retail	structures and building envelope
“Vulcan Retail Park” in Bucharest for NEPI	29,000 m <sup>2</sup>	retail	general contractor, except for MEP
“Timișoara Shopping City” for NEPI	38,000 m <sup>2</sup>	retail	general contractor, except for MEP
Garment production hall in Urlați for OSTAZAR	5,000 m <sup>2</sup>	production	design & execution of structures
“Cuză Vodă” multi-story parking lot in Ploiești for CITY OF PLOIEȘTI	10,000 m <sup>2</sup>	car park	designer & general contractor
IT office building in Timișoara for SAGUARO	2,600 m <sup>2</sup>	office	general contractor
Hydraulic cylinder production hall in Ariceștii Rahtivani for WDP	8,000 m <sup>2</sup>	production	general contractor
Warehouse for WDP in Ariceștii Rahtivani, (phase I)	8,300 m <sup>2</sup>	warehouse	general contractor

## 2013-2010

PROJECTS	AREA	FUNCTION	ROLE
ADEPLAST expanded polystyrene factory expansion in Oradea	3,000 m <sup>2</sup>	production	structures and building envelope
Textile production factory in Ariceștii Rahtivani for ALLIANSO	20,000 m <sup>2</sup>	production	design & execution of structures
“Mărășești” residential building in Ploiești for BAUPARTNER	590 m <sup>2</sup>	residential	designer & general contractor
Textile production factory in Ploiești for BIC	18,200 m <sup>2</sup>	production	design & execution of structures
Biogas factory in Filipeștii de Pădure for GENESIS BIOPARTNER	1,700 m <sup>2</sup>	renewable energy station	designer & general contractor
Warehouse and Bentonite factory in Ariceștii Rahtivani for HALLIBURTON	1,800 m <sup>2</sup>	production & warehouse	designer & general contractor
OTTER shoe factory in Bucharest	3,000 m <sup>2</sup>	logistics	design & execution of structures
“MiniSat production hall” in Timișoara for PRESSAFE	4,000 m <sup>2</sup>	production	design & execution of structures
Automotive spare parts logistics center in Codlea for WDP	7,500 m <sup>2</sup>	logistics	structural design & general contractor
ADEPLAST EPS factory in Ploiești (phase III) and ADEPLAST paint factory in Ploiești	1,910 m <sup>2</sup>	production	designer & general contractor
ADEPLAST dry mortar factory in Roman	4,200 m <sup>2</sup>	production	designer & general contractor
ADEPLAST expanded polystyrene production hall in Roman	2,500 m <sup>2</sup>	production	designer & general contractor
“Cora Shopping Center” in Bucharest	55,000 m <sup>2</sup>	retail	design & execution of structures
INSPET Logistics center for oil distribution in Ploiești	7,500 m <sup>2</sup>	logistics	design & execution of structures
LEMET Furniture warehouse in Brebu	5,000 m <sup>2</sup>	logistics	structural design & general contractor
Aluminum production hall in St. Ana, Arad for MAGONTEC	5,000 m <sup>2</sup>	production	design & execution of structures
“Ploiești Shopping City” for NEPI	2,000 m <sup>2</sup>	retail	design & execution of structures
SCHLUMBERGER headquarters in Ariceștii Rahtivani	20,000 m <sup>2</sup>	office, service & logistics	design & execution of structures
Automotive production hall in Oarja for WDP	8,000 m <sup>2</sup>	production	designer & general contractor
ADEPLAST Expanded polystyrene factory in Corlătești (phases I + II)	7,850 m <sup>2</sup>	production	designer & general contractor
Production hall and logistics center in Ariceștii Rahtivani for ALLIANSO	12,500 m <sup>2</sup>	logistics & production	structures and building envelope
Plastics factory production hall in Oradea for JÁSZ PLASZTIK (phase II)	12,800 m <sup>2</sup>	production	structures and building envelope
KAUFLAND Logistics center in Turda	59,000 m <sup>2</sup>	logistics	design & execution of structures
Warehouse, workshop and office building in Ariceștii Rahtivani for LUFKIN	35,000 m <sup>2</sup>	production & office	design & execution of structures
TORO MANUFACTURING AND SALES factory in Ariceștii Rahtivani	14,000 m <sup>2</sup>	production & office	design & execution of structures
“Severin Shopping Center” in Drobeta-Turnu Severin for BELROM	49,000 m <sup>2</sup>	retail	design & execution of structures
Plastics factory production hall in Oradea for JÁSZ PLASZTIK (phase I)	12,800 m <sup>2</sup>	production	structural design & general contractor

## 2010-2006

PROJECTS	AREA	FUNCTION	ROLE
Electronic components production hall in Oradea for SHINHEUNG	35,000 m <sup>2</sup>	production	structural design & general contractor
BAT warehouse in Ariceștii Rahtivani for ALINSO	20,000 m <sup>2</sup>	logistics	design & general contractor
“Unilever” logistics center in Ariceștii Rahtivani for ALINSO	35,000 m <sup>2</sup>	logistics	design & general contractor
Sports hall for “Vocational School, No. 2” in Bucharest for BUCAREST city hall	6,000 m <sup>2</sup>	educational	design & execution of structures
Electronic components production hall in Oradea for HANIL	26,000 m <sup>2</sup>	production	structures & building envelope
Office building in Otopeni for NOVOMATIC	17,800 m <sup>2</sup>	office	design & execution of structures
Logistics center extension in Ploiești for PLUS	15,000 m <sup>2</sup>	logistics	design & execution of structures
PRADIS office building in Ploiești	1,500 m <sup>2</sup>	office	structures and building envelope
Cellular concrete production hall in Ariceștii Rahtivani for XELLA	8,600 m <sup>2</sup>	production	design & execution of structures
“Uptown” apartments in Ploiești for ADAMA	14,000 m <sup>2</sup>	residential	general contractor
Extension of precast concrete factory in Ariceștii Rahtivani for BAUELEMENTE	4,645 m <sup>2</sup>	production	designer & general contractor
Baupartner Group headquarters in Ariceștii Rahtivani for BAUPARTNER	1,988 m <sup>2</sup>	office	designer & general contractor
“Focșani Retail Park” for BELROM	49,000 m <sup>2</sup>	retail	design & execution of structures
Service and office building in Ploiești for CAMERON	13,000 m <sup>2</sup>	offices & service	design & execution of structures
“Hotel Tiara Ploiești” extension	5,500 m <sup>2</sup>	hotel	design & execution of structures
“West Gate Center Mall” in Craiova for IMMOFINANZ	73,000 m <sup>2</sup>	retail	general contractor, except for MEP
Logistics center and offices in Ploiești for PIRITEX	14,500 m <sup>2</sup>	logistics	design & execution of structures
STAER Furniture store in Focșani	3,500 m <sup>2</sup>	retail	design & execution of structures
BAUELEMENTE pre-cast reinforced concrete elements in Ariceștii Rahtivani	12,600 m <sup>2</sup>	production	designer & general contractor
“Cubic Center” office building in Bucharest	30,000 m <sup>2</sup>	office	general contractor
KAUFLAND supermarket and headquarters in Bucharest	15,000 m <sup>2</sup>	retail & headquarters	designer & general contractor
“Edenia” apartments in Bucharest for ADAMA	25,000 m <sup>2</sup>	residential	structural & finishing works
“Titanium” apartments in Bucharest for ADAMA	6,000 m <sup>2</sup>	residential	general contractor
INTEREX supermarket in Târgoviște	4,000 m <sup>2</sup>	retail	general contractor
BMW service building and offices in Bucharest for MHS BUS & TRUCK	4,600 m <sup>2</sup>	showroom & service	general contractor
MAN service building and offices in Bucharest for MHS BUS & TRUCK	4,600 m <sup>2</sup>	showroom & service	designer & general contractor
PLUS DISCOUNT supermarket in Medgidia	1,630 m <sup>2</sup>	retail	general contractor

## 2006

PROJECTS	AREA	FUNCTION	ROLE
RONDOCARTON Corrugated cardboard factory in Târgoviște	17,000 m <sup>2</sup>	production	designer & general contractor
Warehouse & office building in Bucharest for SUPERFOOD	1,900 m <sup>2</sup>	logistics	general contractor
<b>2006-2022</b>			
55 KAUFLAND supermarkets across Romania	396,321 m <sup>2</sup>	retail	design & execution of structures
11 LI DL supermarkets across Romania	28,069 m <sup>2</sup>	retail	design & execution of structures
31 warehouses and office buildings for CTP across Romania	1,060,578 m <sup>2</sup>	warehouse	design & execution of structures

**TOTAL BUILT AREA:****4,483,020 m<sup>2</sup>**



## SUMMARY AND CONTACT

---

### A SHORT SUMMARY

Meeting your needs is our mission. We offer integrated solutions for buildings, from design and production to general operations, giving people the power to grow their business and projects.

Our mission is to improve your project by using our innovative construction methods to fulfill your needs.

### CONTACT

E: [lajos.hardi@baupartner.hu](mailto:lajos.hardi@baupartner.hu)  
P: + 36 30 114 8808



[www.baupartnergroup.ro](http://www.baupartnergroup.ro)

---



---

**WWW.BAUPARTNERGROUP.RO**

# THE RIGHT PARTNER

---

**BAUPARTNER  
GROUP OF COMPANIES**



---

## CONTACT

Address:  
Baupartner HU KFT  
Hungary

Phone

Online  
Email: [lajos.hardi@baupartner.hu](mailto:lajos.hardi@baupartner.hu)

1112 Budapest | Balatoni u 2/A  
B épület, 1. emelet

+36 30 114 8808

Website: [www.baupartner.hu](http://www.baupartner.hu)

---